

§II. Installation

Step 1. Unzip the file named **ANSYS-VABS_GUI_Release_Alpha-V-1.zip**.

Step 2. In the released folder, find the file named **menulist###.ans**

Step 3. According to ANSYS Release Notes 17.0, the file name of **menulist.ans** previously contained the release number as a part of the file name, but now do not. Therefore, in this step, please **delete ###** in the file name of **menulist###.ans**.

Step 4. Open file **menulist.ans**, and change “**current_working_directory**” into your real ANSYS current working directory. For example, if the ANSYS working directory is **E:\VABSGUI_Release_Alpha**, then change the file according to the following Fig. 2.1.

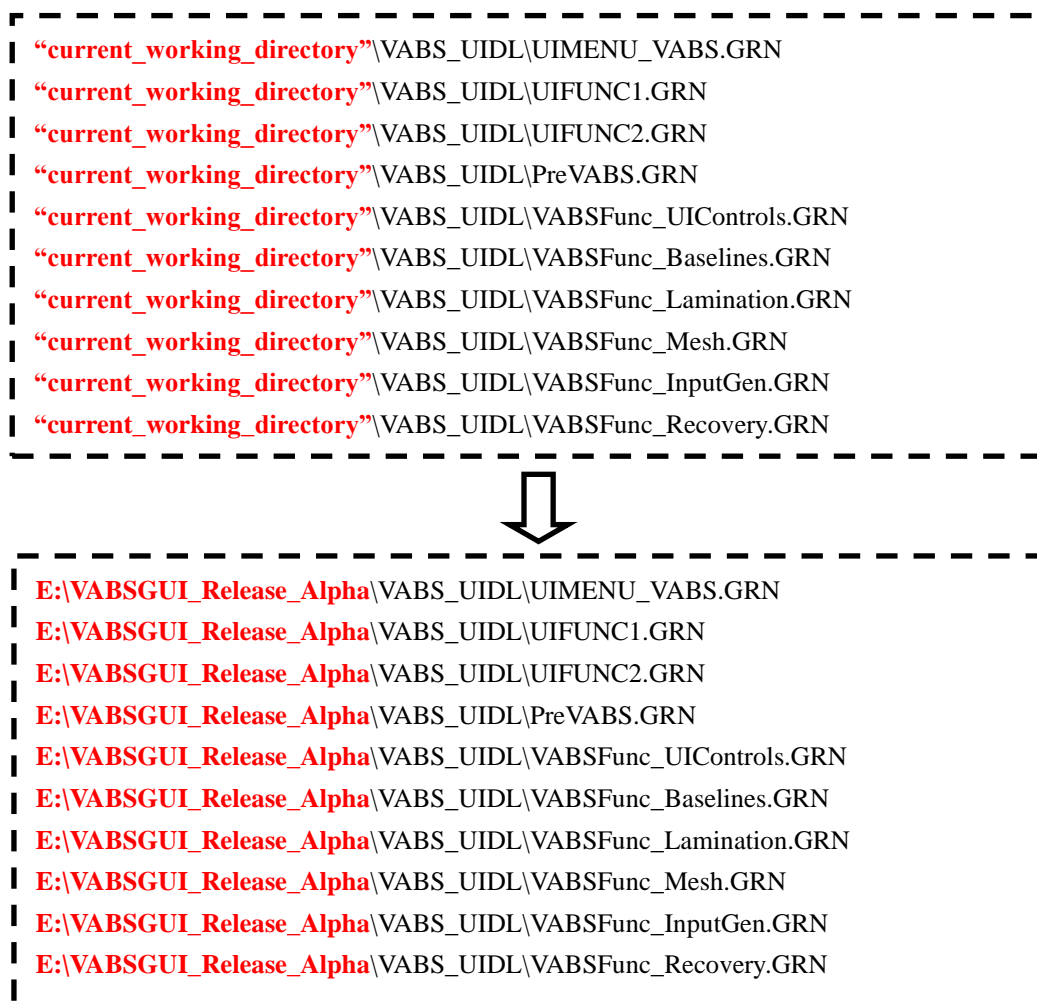


Fig. 2.1 Set working directory in file **menulist.ans**

Step 5. Copy VABS executable file and the corresponding license into the working directory.

Step 6. As shown in Fig. 2.2, direct ANSYS to the working directory set up in **Step 4**.

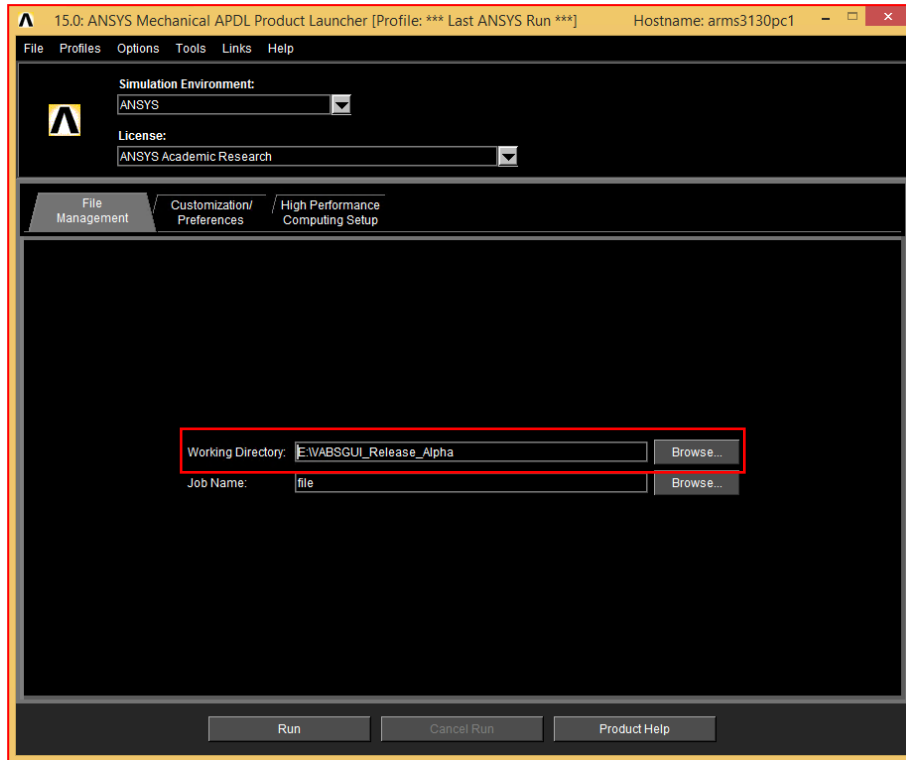


Fig. 2.2 Set working directory in ANSYS APDL Launcher

Step 7. As shown in Fig. 2.3, open ANSYS and check the observation of PreVABS in the menu list on the left side of ANSYS window.

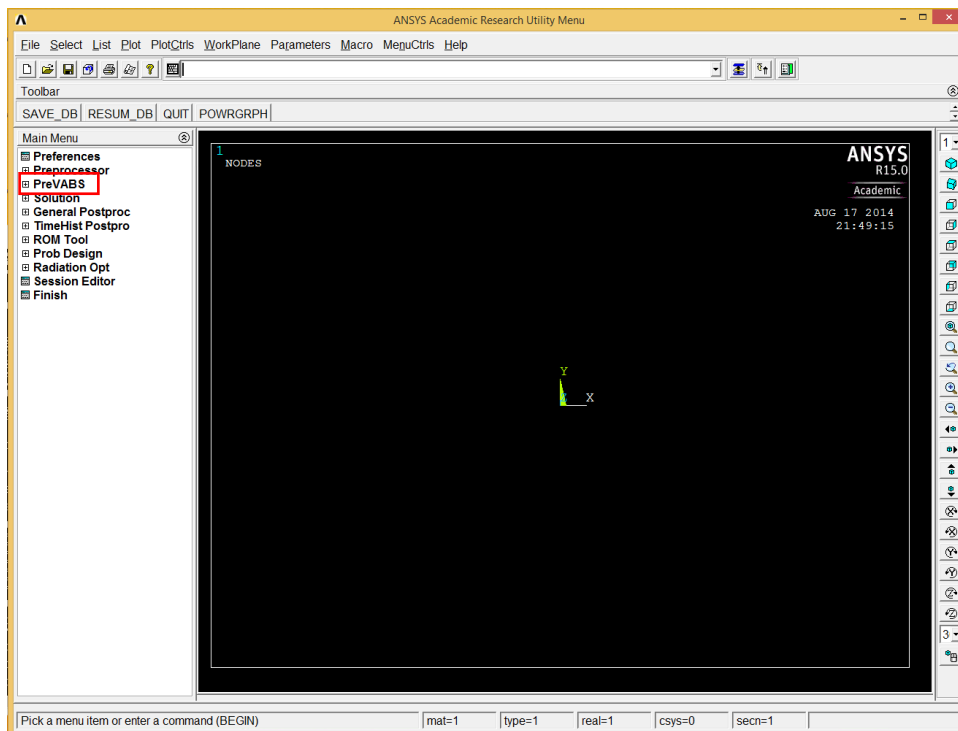


Fig. 2.3 ANSYS-VABS GUI environment